

Albany

PWSS No. 1010006

Gentry County

6 wells, 17 potential contaminant sources

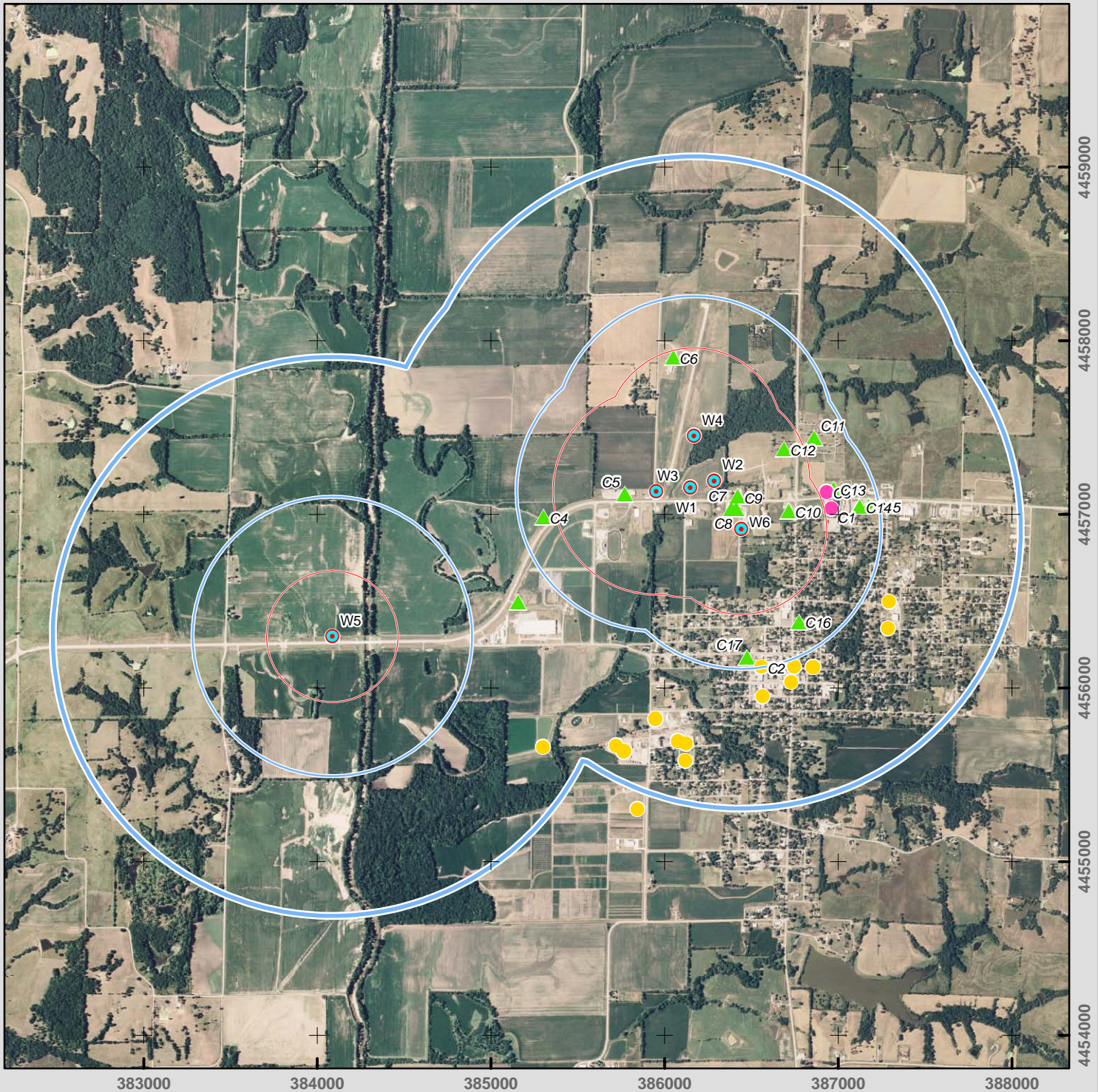
Prepared by:



Map Update: Feb 23, 2009



Missouri Department of Natural Resources



Well System

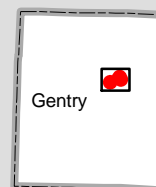
- System Well

SWAP Delineation Boundary

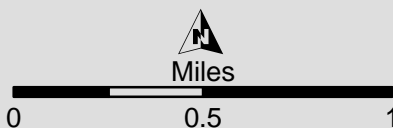
- 20-year time of travel
- Half-mile buffer
- One-mile buffer

Potential Contaminant Source

- Database Source (Location Confirmed)
- Database Source (Location Unconfirmed)
- SWIP Field Data



SWAP - Source Water Assessment Plan --
<http://drinkingwater.missouri.edu/swap/>
 For basemap symbols, see the U.S. Geological Survey (USGS) publication: Topographic Map Symbols.



Although all data in this dataset have been used by the Missouri Department of Natural Resources (MoDNR), no warranty, expressed or implied, is made by MoDNR as to the accuracy of the data and related materials. The act of distribution shall not constitute any such warranty, and no responsibility is assumed by MoDNR in the use of these data or related materials. This map is subject to change as additional information is acquired. Additional information at: <http://drinkingwater.missouri.edu>

Albany

PWSS No. 1010006

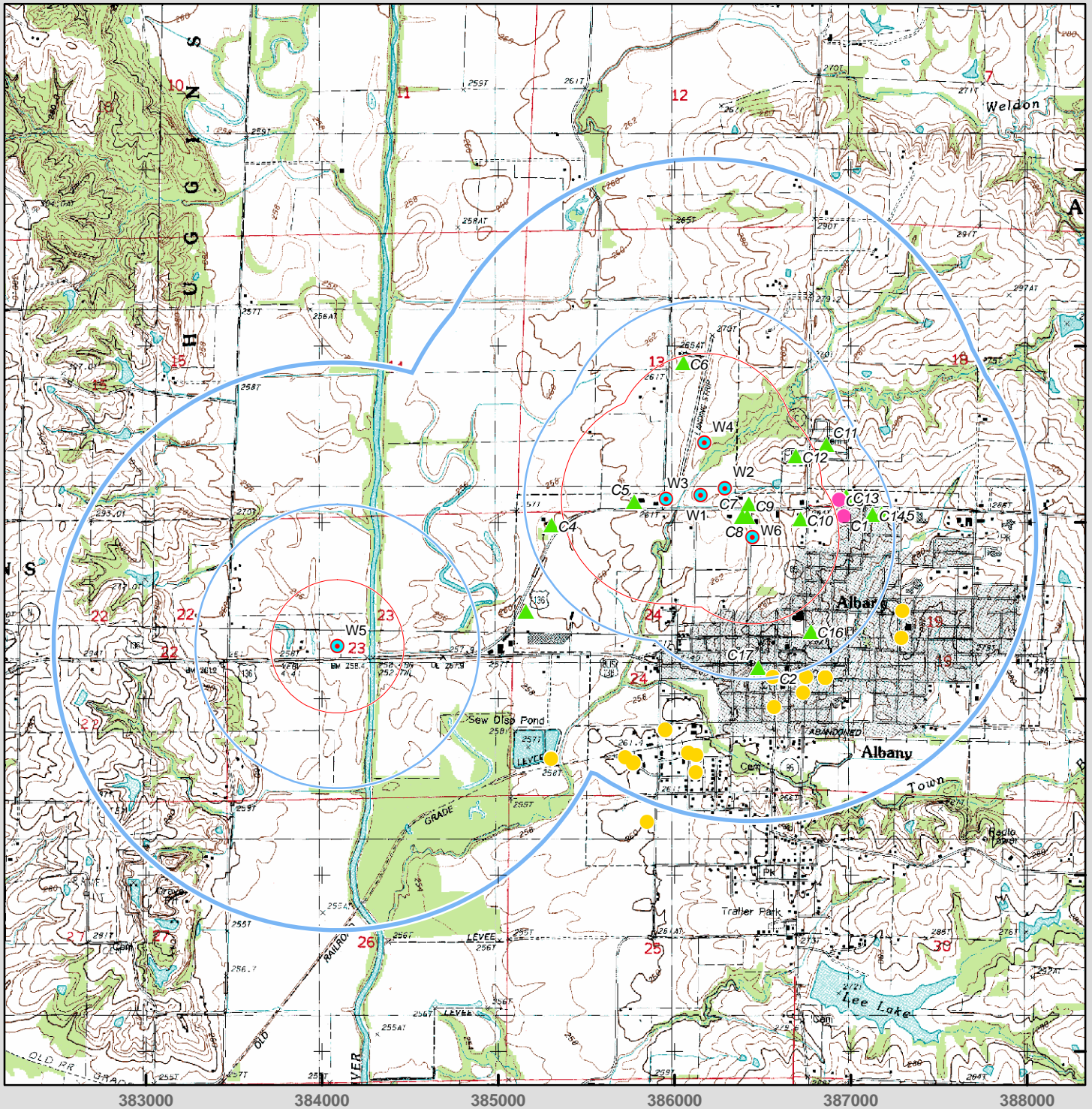
Gentry County

6 wells, 17 potential contaminant sources

Prepared by:



Map Update: Feb 23, 2009



Well System

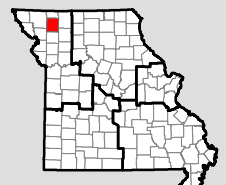
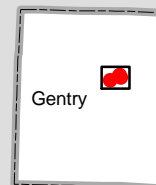
- System Well

SWAP Delineation Boundary

- 20-year time of travel
- Half-mile buffer
- One-mile buffer

Potential Contaminant Source

- Database Source (Location Confirmed)
- Database Source (Location Unconfirmed)
- SWIP Field Data



SWAP - Source Water Assessment Plan --
<http://drinkingwater.missouri.edu/swap/>
 For basemap symbols, see the U.S. Geological Survey (USGS) publication: Topographic Map Symbols.

Although all data in this dataset have been used by the Missouri Department of Natural Resources (MoDNR), no warranty, expressed or implied, is made by MoDNR as to the accuracy of the data and related materials. The act of distribution shall not constitute any such warranty, and no responsibility is assumed by MoDNR in the use of these data or related materials. This map is subject to change as additional information is acquired. Additional information at: <http://drinkingwater.missouri.edu>

Albany

PWSS No. 1010006

Gentry County, sheet 1 of 2

6 wells

Prepared by:



Map Update: Feb 24, 2009



Missouri Department of
Natural Resources

Well Number	W1	W2	W3	W4	W5
Extended PWS #	1010006101	1010006102	1010006103	1010006104	1010006105
Local Well Name	Well #1	Well #2	Well #3	Well #4	Well #5
Well ID #	11679	10017	11680	11681	10019
DGLS ID #					
Facility Type	City	City	City	City	City
Status	Active	Active	Active	Active	Active
Latitude	40.25711	40.2575	40.25689	40.2598	40.24911
Longitude	-94.33881	-94.33719	-94.34111	-94.33861	-94.36289
Location Method	DOQQ	DOQQ	DOQQ	DOQQ	DOQQ
Method Accuracy (ft)	33	33	33	33	33
USGS 7.5 Quadrangle	Albany North	Albany North	Albany North	Albany North	Albany South
County	Gentry	Gentry	Gentry	Gentry	Gentry
MoDNR Region	Kansas City	Kansas City	Kansas City	Kansas City	Kansas City
Date Drilled (year)	1958	1958	1969	1975	1977
Material (C/U)	Unconsolidated	Unconsolidated	Unconsolidated	Unconsolidated	Unconsolidated
Base of Casing Formation	Alluvium	Alluvium	Alluvium	Alluvium	Glacial Deposits
Total Depth Formation	Alluvium	Alluvium	Alluvium	Alluvium	Glacial Deposits
Total Depth	64	80	68	80	185
Ground Elevation (ft)					
Top Seal	Satisfactory	Satisfactory	Satisfactory		
Bottom Seal					
Casing Depth (ft)	49	64	53	65	170
Casing Size (in)	12	12	12	12	12
Casing Type	Steel	Steel	Steel	Steel	Steel
Elev. of Casing Top (ft)					
Outer Casing Depth (ft)					
Outer Casing Size (in)					
Screen Length (ft)	15	15	15	15	30
Screen Size (in)	12	12	12	12	12
Static Water Level (ft)	34	40	34	33	100
Well Yield (gpm)	64	70	100	70	125
Head (ft)	38	40	40	42	50
Draw Down (ft)	9	8	8	5	20
Pump Test Date (year)	1958	1958	1969	1975	1977
Pump Type	Submersible	Submersible	Submersible	Submersible	Submersible
Pump Manufacturer	Pomona	Airmade	Airmade		
Pump Depth (ft)	56	68	50	70	160
Pump Capacity (gpm)	100	100	100	100	250
Pump Meter (Y/N)					
VOC Detection (Y/N)	N	N	N	N	N
Nitrate Detection (Y/N)	N	N	N	N	N
Chlorination (Y/N)	N	N	N	N	N
Filtration (Y/N)	Y	Y	Y	Y	Y
GWUDISW (Y/N)	Y	Y	Y	Y	Y
Surface Drainage					
State Approved(Y/N)	N	N	N	N	N
Date Abandoned (year)					
Date Plugged (year)					

Although all data in this dataset have been used by the Missouri Department of Natural Resources (MoDNR), no warranty, expressed or implied, is made by MoDNR as to the accuracy of the data and related materials. The act of distribution shall not constitute any such warranty, and no responsibility is assumed by MoDNR in the use of these data or related materials. This map is subject to change as additional information is acquired. Additional information at: <http://drinkingwater.missouri.edu>

Albany

PWSS No. 1010006

Gentry County, sheet 2 of 2

6 wells

Prepared by:



Map Update: Feb 24, 2009



Missouri Department of
Natural Resources

Well Number	W6
Extended PWS #	1010006106
Local Well Name	Well #6
Well ID #	10018
DGLS ID #	_____
Facility Type	City
Status	Active
Latitude	40.255
Longitude	-94.33531
Location Method	DOQQ
Method Accuracy (ft)	33
USGS 7.5 Quadrangle	Albany North
County	Gentry
MoDNR Region	Kansas City
Date Drilled (year)	1990
Material (C/U)	Unconsolidated
Base of Casing Formation	Alluvium
Total Depth Formation	Alluvium
Total Depth	80
Ground Elevation (ft)	_____
Top Seal	_____
Bottom Seal	_____
Casing Depth (ft)	62
Casing Size (in)	12
Casing Type	Steel
Elev. of Casing Top (ft)	_____
Outer Casing Depth (ft)	_____
Outer Casing Size (in)	_____
Screen Length (ft)	20
Screen Size (in)	12
Static Water Level (ft)	30
Well Yield (gpm)	200
Head (ft)	_____
Draw Down (ft)	10
Pump Test Date (year)	1990
Pump Type	Submersible
Pump Manufacturer	_____
Pump Depth (ft)	_____
Pump Capacity (gpm)	250
Pump Meter (Y/N)	_____
VOC Detection (Y/N)	N
Nitrate Detection (Y/N)	N
Chlorination (Y/N)	N
Filtration (Y/N)	Y
GWUDISW (Y/N)	Y
Surface Drainage	_____
State Approved(Y/N)	N
Date Abandoned (year)	_____
Date Plugged (year)	_____

Although all data in this dataset have been used by the Missouri Department of Natural Resources (MoDNR), no warranty, expressed or implied, is made by MoDNR as to the accuracy of the data and related materials. The act of distribution shall not constitute any such warranty, and no responsibility is assumed by MoDNR in the use of these data or related materials. This map is subject to change as additional information is acquired. Additional information at: <http://drinkingwater.missouri.edu>